



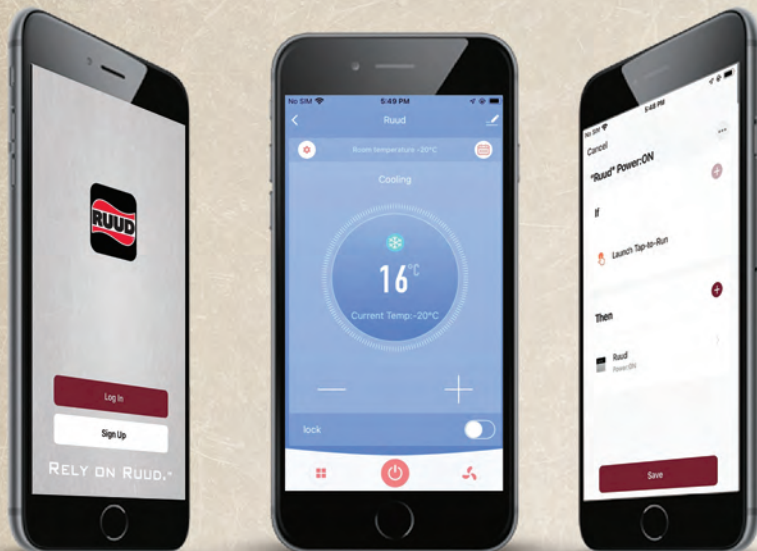
PIONEERED FOR YOUR COMFORT



Download the App



RELY ON RUUD.™



Multiple Operating Modes Smart Control

You can control your products in group ,or smart scenes via the App. It's easy to use. Get your location and automation control the device base in the local environment

Voice Control

Multi-platform seamless integration , intelligent linkage with Amazon , Alexa , Google home, easy to manage home devices , create an intelligent scene for you, make life easier.

Google Home

amazon echo



RELY ON RUUD.™

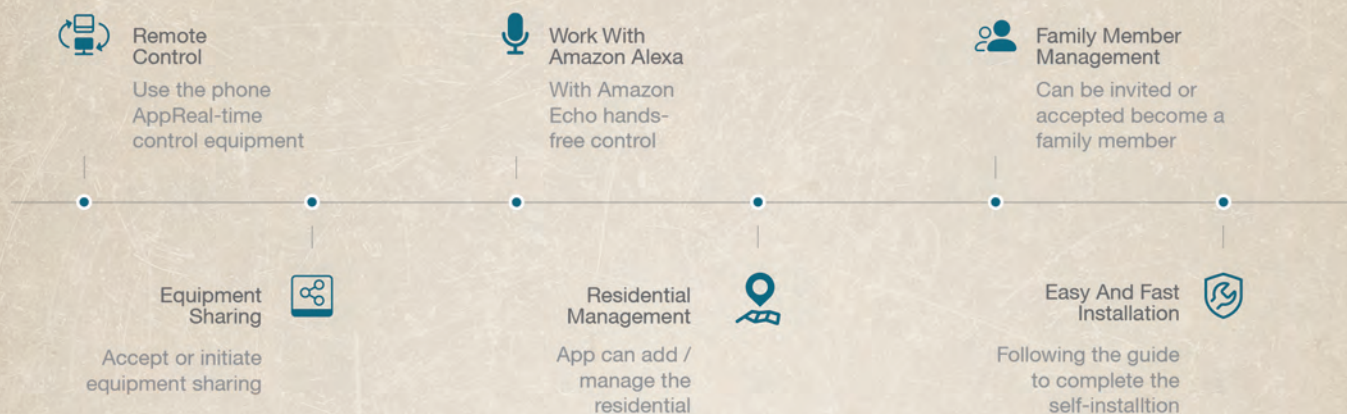


Make Your Thermostat More Smart

You can control the thermostat anywhere via the App, you can download the App from Apple Store and Google Play.



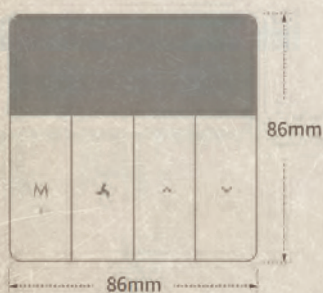
Download the App



Tech-Specs

Color: White / Silver
Screen: LCD
Language: English
Sensor: NTC 10K B_{25/50}:3950k

Temp Range: 5 ~35°C
Accuracy: $\pm 1^{\circ}\text{C}$
Size: 86*86*13 mm
APP: Android / iOS



Screen & Button Functions

- ☀ — Heating Mode
- ❄ — Cooling Mode
- 🌀 — Fan
- 🌀 — Ventilation Mode
- ➡ — Loading

a Room Temperature

b Set Temperature

c From left to right:

Lock, Cloud Connection,
WiFi Connection



RELY ON RUUD.™



Connect To The Internet

- Press "✓" for 3s, "Wi-Fi" will flash quickly
- App enter the add device page, select the type of product.
- Enter Wifi user name and password and start pairing



Installation Manual

• Environment:

Install in a 86*86 box which is installed in the wall. Powered by 220V AC/24V AC

• Safety:

Before installation, please confirm the power supply has been cut off.

*220 vac- TH1151

**24 VAC- TH1152 and TH1153



86 box

Models TH1151 and TH1153

Advanced Settings

Long press '▲' and '▼' (3s) enter the advanced setting, press '↵' to switch setting items; Press '▲' or '▼' to change the setting value; Press 'M' or without any operation in 10s, will confirm the current setting and return to main menu; Press '▲' or '▼' to select:

- 1 Sensor type: 00: Internal 01: External. Default is 00
- 2 The fan switch: whether close the fan while the room temp reaches the set temp 0: No 1: Yes Default is 1 (Only use in Cooling mode)
- 3 Temperature differential to start the compressor and fan: 1-9 °C, Default 2 °C
- 4 Temperature calibration : -9°C~+9°C, Default is 0°C
- 5 Highest target temp: 35~90°C, Default is 35°C
- 6 Lowest target temp: 0~30 °C, Default is 20°C
- 7 The shortest interval between 2 starts of cooling: 0, 3, 5 min, default: 3 min
- 8 Brightness of off-screen backlight: 1-90, default: 20
- 9 System restart: Press '▲' or '▼' to switch the '→' to '==', press 'M' to confirm
- 10 Factory setting: Press '▲' or '▼' to switch the '→' to '==', press 'M' to confirm

Models TH1152

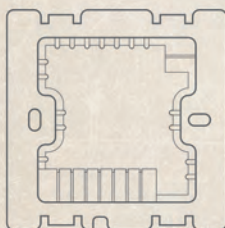
Advanced Settings

Long press '▲' and '▼' (3s) enter the advanced setting, press '↵' to switch setting items; Press '▲' or '▼' to change the setting value; Press 'M' or without any operation in 10s, will confirm the current setting and return to main menu; Press '▲' or '▼' to select:

- 1 Sensor type: Internal 01: External. Default is 00
- 2 The fan switch: 0: IDU fan will switch OFF in this mode on achieving the set temperature; 1: IDU fan will continue to run based on the fan speed selected even after set temp is achieved.(Default 1)
- 3 Differential 1: 1-5, default 1°C
- 4 Differential 2: 2-5, default 2°C
- 5 Temperature calibration: -9°C~9°C, Default is 0 °C
- 6 Highest target temp: 35~90°C, Default is 35°C
- 7 Lowest target temp: 0~30°C, Default 20°C
- 8 The shortest interval between 2 starts of cooling: 0, 3, 5 min, default: 3 min
- 9 Brightness of off-screen backlight: 1-90, default: 20
- 10 System restart: Press '▲' or '▼' to switch the '→' to '==', press 'M' to confirm
- 11 Factory setting: Press '▲' or '▼' to switch the '→' to '==', press 'M' to confirm

Installation Steps

- ① Connect each wiring
- ② Connect the thermostat to electrical box
- ③ Buckle up the power box and panel



Other Operations & Warning

a. Lock & Unlock:

Long press the 'M' and '▼' to lock or unlock.

b. ERR Exception:

When the 'Err' light up, it means the sensor mode was wrong or the sensor was broken. And the temp value in the screen will show'---'.



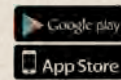
RELY ON RUUD.™



NOTES



About Ruud®?



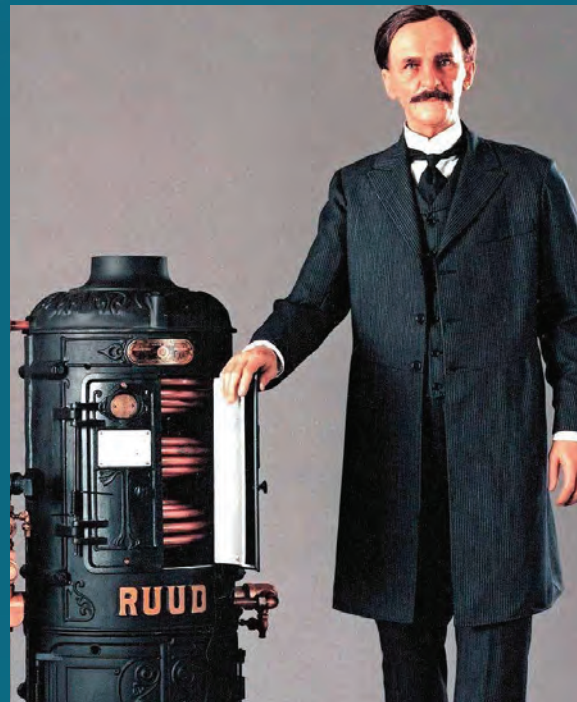
Download the App

More than 100 years ago, Edwin Ruud, a Norwegian mechanical engineer, came to America and developed the first successful automatic water heater. That early success marked the beginning of a tradition of innovation and value that led to the introduction of RUUD® air conditioning and water heating equipment in the 1950s.

Since then, the RUUD® has grown into one of North America's largest manufacturers of quality air conditioning and water heating products for residential and light commercial use.

Today, RUUD® operates manufacturing facilities employing highly trained workers and state-of-the-art equipment. Over the years, the product lines have expanded, changed, and improved significantly as new design techniques and better manufacturing technologies have become available.

What remains unchanged throughout our history, however, is our commitment to producing the most reliable, long-lasting, efficient equipment you can buy.



RELY ON RUUD.™

@ruudmea

Ruud Middle East and Africa

Learn more at:
www.ruud-mea.com